

Wednesday, 3rd October 2019

# IBCP Curriculum evening 2019



# Aims of the IBCP

- Thoughtful and active citizens
- Responsible for their own learning and development
- Competent and confident communicators
- Reflective, creative and critical thinkers
- Aware of our shared human condition
- Able to establish a sense of identity in a context of time and place
- Prepared to think about the needs, values and perspectives of other people
- Active participants in their own intercultural learning.

# 2019 results for the IBCP

100% pass rate for the IBCP

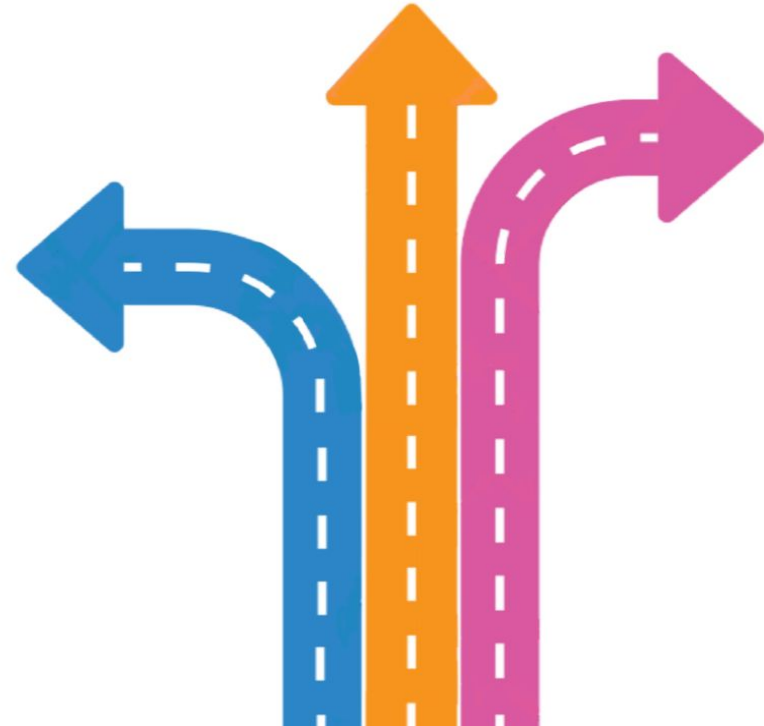
D\* and D across all the vocational subjects.

Students achieving an average of a Level 4.5 in their DP subjects.

# 2019 destinations and pathways

Destination		
University	23	62%
Apprenticeship	6	16%
Employment	3	8%
Forces	3	8%
Policing	2	5%

Pathway		
Vocational	14	38%
Diploma Subject	11	30%
Other	12	32%





**I  
N  
T  
E  
R  
N  
S  
H  
I  
P  
S**

**SPORT & EXERCISE  
SCIENCE**



**Personal & Professional  
Skills, Service Learning,  
Japanese**

**HL Biology  
SL Psychology  
SL English Literature**

# CAREER RELATED STUDIES

16 lessons per fortnight

- Students want to achieve **D\*D\***, a Distinction is required from the beginning
- Top universities **are accepting BTEC** if they relate to the area of continued study and with complimentary academic subjects, including a HL subject.

- Rigorous coursework schedule that must be met.

- Students are limited to one resubmission.

**Business and Finance**  
**Sport and Exercise Science**  
**Design Engineering**  
**Information Technology**  
**Health and Social Care**

# IB Subjects

Maintains academic study.

Compliments the career related study

Ensures a university pathway can be chosen.

Higher Level subjects (8 lessons per fortnight)

- Final exams and **coursework/internal assessment** varies between subjects

Standard Level subjects (5 lessons per fortnight)

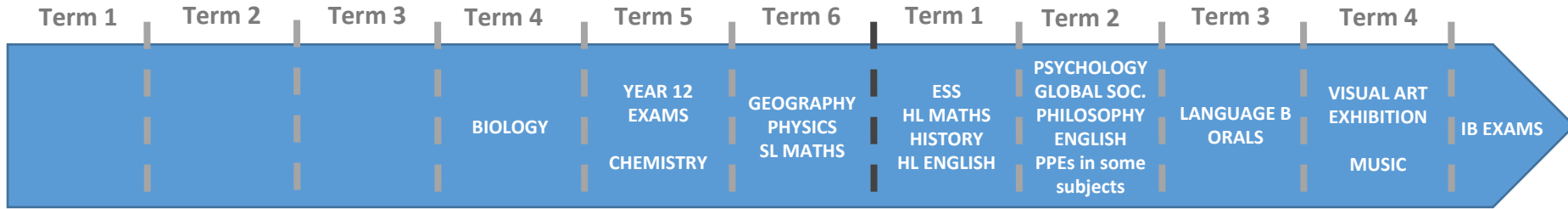
- Final exams and **coursework/internal assessment** varies between subjects

# Putting it all together...IBCP Calendar

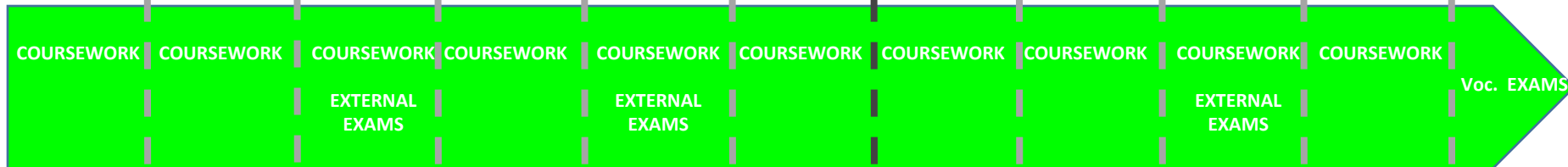
YEAR 12

YEAR 13

DP SUBJECTS



VOCATIONAL



THE CORE



UCAS





# IBCP Core



## Service learning

- Find a problem in the local community (school/Broadstairs/Thanet) and aim to solve it through community involvement
- May be a group/project that students are already involved with but hours must be recorded from September of Year 12
- **Minimum of 50 hours signed off and a portfolio of evidence**

**Running the library, Raising awareness of a charity,**

**Running clubs for younger children**

# IBCP Core

## Personal and Professional Skills

- Lessons to develop study and employability skills.
- Designed to compliment the pathway through sixth form
  - **Preparing for internships**
  - **Personal branding**
  - **Study skills**
  - **Developing critical thinking**
  - **Understanding ethics**



# IBCP Core

## Language Development (1 lesson per fortnight)

- Japanese cultural enrichment lessons
- Language, food, hobbies etc.
- **50 hours completed and folder of evidence**



# IBCP Core

## Ethical project

- Investigating an ethical issue
- Considering the issue from a global and local perspective
- Critically analysing the impact on all stakeholders
- Maintaining a strong 'student voice' throughout
- An extended piece of independent work that prepares students for further study



# Internship

- Entering the workplace for 1 day a week.
- Completing tasks and responsibilities as an employee.
- Completing projects set by vocational subject teachers to satisfy units of work for qualifications
- Gaining invaluable experience and building interpersonal and employability skills
- Confidence



# Internships timeline

- 8th October - interviews with EBP (our 'agency')
- 5th November - placements confirmed
- 3rd December - all students to have arranged and completed interview at placement
- 7th January - Health and Social Care placements start
- 4th February - Business, Engineering, IT, Sport placements start
- 31st March - All placements finish

# Study periods

- Work an 08.30 - 15.30 school day
- Chromebooks available to borrow from the sixth form
- Library is available for 50% of the time.
- School open until 4.30 every evening
- Tuesday and Wednesday 3.30 - 5.00 silent study in M5

	MonA	TueA	WedA	ThuA	FriA
1	Maths studies			CTEC Health & Social Care	CTEC Health & Social Care
2		HL Psychology		SL English	CTEC Health & Social Care
3	CTEC Health & Social Care	Service learning		HL Psychology	HL Psychology
4	SL English	CTEC Health & Social Care	CTEC Health & Social Care	Language Development	
	Mentoring	Mentoring	Mentoring	Mentoring	Mentoring
5	HL Psychology	SL English	CTEC Health & Social Care	Maths studies	

	MonB	TueB	WedB	ThuB	FriB
1	SL English	CTEC Health & Social Care	CTEC Health & Social Care	HL Psychology	CTEC Health & Social Care
2	Maths studies		CTEC Health & Social Care		CTEC Health & Social Care
3	HL Psychology	Maths studies			Maths studies
4		PPS	CTEC Health & Social Care	CTEC Health & Social Care	SL English
	Mentoring	Mentoring	Mentoring	Mentoring	Mentoring
5	CTEC Health & Social Care	HL Psychology		CTEC Health & Social Care	HL Psychology

# When you need help ...

- It's better to communicate first
- Parent-school communication
- Emails:
  - Deputy head of sixth form:  
[mlinton@danecourt.kent.sch.uk](mailto:mlinton@danecourt.kent.sch.uk)
  - Head of sixth form: [hale@danecourt.kent.sch.uk](mailto:hale@danecourt.kent.sch.uk)
  - Absence: [sfabsence@danecourt.kent.sch.uk](mailto:sfabsence@danecourt.kent.sch.uk)