

**The following emails were sent to parents of all students due to attend Dane Court Grammar school from
Thursday 3 September 2020**

Email 1 (sent Thursday 27 August 2020)

Dear Parent/Guardian,

We hope that you and your families have had a restful and enjoyable summer. As we approach the return to school for all students in all year groups on Thursday 3rd September we wanted to share some important information with you and your child. Below you will find information about the structure of the school day and year group zones including mentor group bases, the timetable and year group social zones. All of this will be clearly marked upon students' arrival to school and we have attached maps for the school site for you to look at. We would really appreciate it if you went through this information with your child, we have also sent this information directly to your child's school email address..

The changes made here help to ensure that we are in line with Government and Department for Education guidance and as such are the best ways of keeping our students, their families and our staff safe. The new structures will mean new routines and new ways of working for both staff and students. We know that our students will work with us to adapt, adjust and make a success of this new situation and whilst at first it may be a challenge, we know we will be successful in meeting this challenge and ensuring that our students are happy at school and making progress in their learning.

Thank you for taking the time to go through this information with your child. If you or they have any questions then please do not hesitate to get in touch. We will also be sending you information on the specific structure of the first two days of the term shortly.

We very much look forward to seeing all of our students on Thursday 3 September.

Sincerely

SLT

Timetable

	Year 7	Year 8	Year 9	Year 10	Year 11	Year 12/13
08:40	1	1	1	1	1	1
09:40						
09:45	2	2	2	2	2	2
10:45						
10:45	Break	Break	Break	Break	Break	Break
11:05						
11:05	3	3	3	3	3	3
12:05						
12:10	4	4	4	4	4	4
13:10						
13:10	Lunch - Mentor_	Lunch - Mentor_	Lunch - Mentor_	Mentor -1315-1335 -	Mentor_ 1315-1335 -	Mentor_ 1315-1335 -
14:15						
14:20	5	5	5	5	5	5
15:20						

Year group teaching zones -

- Key Stage 3 Students taught in mentor bases for most subjects
- Key Stage 4/5 to be taught in D,N, M, L and C rooms
- Some specialist classrooms to be used for all year groups

Plaza and mentor base

Year 7 - Sorrento		Year 8 - Tallinn		Year 9 - Barcelona		Year 10 - Delphi		Year 11 - Neuchatel		Year 12 - M/C		Year 13 - L/C	
House	Room	House	Room	House	Room	House	Room	House	Room	House	Room	House	Room
B	S9	B	T8	B	B9	B	D1	B	N4	B	C9	B	L11
D	S8	D	T7	D	B8	D	D7	D	N5	D	C5	D	L8
H	S7	H	T5	H	B7	H	D8	H	N7	H	M2	H	C4
N KLB	S5	N	T4	N	B4	N	D9	N	N8	N	M4	N	L5
N MS	S1	S	T3	S	B3	S	D10	S	N1	S	M5	S	L4
S	S4	T	T1	T	B1	T	D11	T	Library	T	M7	T	L3
T	S3												

Year group school site information

	Year 7 - Sorrento	Year 8 - Tallinn	Year 9 - Barcelona	Year 10 - Delphi	Year 11 - Neuchatel	6th Form - M, L, C
Year Leader and Deputy	Mrs Towse, Mr Buttery, Mr Howard S Office	Mr Alderson, Miss Bolt T Office	Mr White, Miss Metcalfe B Office	Mrs Razzaq, Mrs Leese D Office	Mr Wheeler, Mrs Brissenden N Office	Mr Pleasant, Mrs Linton 6th Form Office
Indoor Space	S plaza	T Plaza	B Plaza	D Plaza	N Plaza	6th Form Area/Heart
Extra Space	Student mentor base	Student mentor base	Student mentor base	Student mentor base	Student mentor base	Student mentor base
Quiet Room	S3	T8	B5	D3	N3	6th Form Study Area
Entrance/ Exit	Delivery Gate - B Fire Exit 1 - Stairs - S Plaza	Art gate - Stairwell - T Plaza	Fairfield Road Gate - B Fire Exit 2 - B plaza	Sports Hall Gate 1 - D fire exit - D Plaza	Sports Hall Gate 2 - N fire exit stairs N Plaza	Main Entrance - Wait in Heart - 6th Form study space before going to lessons
Outdoor Social Space	Fairfield Road gate grass	Delivery Gate grass	Broadstairs Road grass	Outside Science	Between Science and Sports Hall	Benches by bike sheds
Activity Area	Grass area by tennis courts	Rugby Pitch	Hard Courts	Football Pitch down bank	Top Football Pitch	Water Tower Football Pitch
Pathways	S - Fire stairs - Service gate - Tennis courts grass	T - Main Stairs - Canteen double doors - Rugby Pitch	B - Heart - D Doors - Hardcourts	D - Fire Exit - Steps - Behind top pitch - Pitch down bank	N - Fire Exit - side of sports hall - Top Pitch	Heart - D doors - Side of Hardcourts, behind goal - down bank - Water Tower
Canteen Entrance (When fully open)	Fairfield side of Canteen	Main Stairs - Grab and Go	Heart - Delphi Side Canteen	D - Heart - Delphi Side Canteen	N - Heart - Grab and Go	L stairs - RR corridor - Fairfield Road side of canteen

One way system -

- **Up Heart main stairs left, down main stairs left.**
- **Languages corridor, if taught in L then you must go down the stairs and through RR corridor to the canteen then onto the next lesson.**
- **If going to L you must go up the main stairs to get there.**
- **If going to N, go up sixth form stairs, out down main stairs**

Note, coloured lanyards to differentiate year groups

Email 2 (sent Thursday 27 August 2020)

Dear parent/guardian,

Please find below the timetable for the 3 and 4 September along with maps of the school zones. This contains information on timings and lessons and should be read in conjunction with the information sent earlier today.

Please also find below an information leaflet from the government regarding the return to school. Parents are encouraged to visit [gov.uk/backtoschool](https://www.gov.uk/backtoschool) for information and practical guidance to help them plan for their children's return to school. This includes our latest update to the [guidance for parents and carers on what they need to know about early years providers, schools and colleges in the autumn term](#).

Many thanks

Dane Court



Thursday 3rd September 2020

	Year 7	Years 8-9	Years 10-11	Year 12	Year 13
0800	<i>Arrive and go straight to year plaza</i>	<i>Arrive and go straight to year plaza</i>	<i>Arrive and go straight to year plaza</i>	<i>Arrive and go straight heart area</i>	<i>Arrive and go straight heart area</i>
0835	<i>Go to Mentor Room</i>	<i>Go to Mentor Room</i>	<i>Go to Mentor Room</i>	<i>Go to Mentor Room</i>	<i>Go to Mentor Room</i>
P1	<i>Mentor Time for all, timetable check, H/W diary handout, Behaviour and Attitudes Booklet, twenty minute window to do a school tour as indicated below. Please note that this must include visiting their locker and emptying it of all contents.</i> 7-13B - 0840-0900 7-13D - 0900-0920 7-13H - 0920-0940 7-13N - 0945-1005 7-13S - 1005-1025 7-13T - 1025-1045				
P2					
Break	<i>Normal Break in year groups zones</i>				
P3	<i>Normal Lesson</i>				
P4	<i>Normal Lesson</i>	<i>Normal Lesson</i>	<i>Normal Lesson</i>	<i>BDH course changes - CP - 6th Form office BDH timetable changes - NA - Office</i>	<i>Normal Lesson</i>
Lunch/ Mentor time	<i>Lunch (delivered) then GoogleMeet Assembly with YL at 1355</i>	<i>Lunch then GoogleMeet Assembly with YL at 1355</i>	<i>GoogleMeet Assembly with YL at 1310 then lunch</i>	<i>GoogleMeet Assembly with HoS at 1310 then lunch</i>	<i>GoogleMeet Assembly with HoS at 1310 then lunch</i>
P5	<i>Year 7 dismissed at 1510</i>	<i>Year 8 dismissed at 1515 Year 9 dismissed at 1520</i>	<i>Year 10 dismissed at 1515 Year 11 dismissed at 1520</i>	<i>NST course changes - CP - 6th Form office NST timetable changes - NA - Office Year 12 dismissed at 1520</i>	<i>Year 13 dismissed at 1520</i>



Friday 4th September

	Year 7	Years 8-9	Years 10-11	Year 12	Year 13
0800	<i>Arrive and go straight to year plaza</i>	<i>Arrive and go straight to year plaza</i>	<i>Arrive and go straight to year plaza</i>	<i>Arrive and go straight heart area</i>	<i>Arrive and go straight heart area</i>
0835	<i>Go to Sorrento</i>	<i>Go to Tallinn (8) and Barcelona (9)</i>	<i>Go to Delphi (10) and Neuchatel (11)</i>	<i>Go to 1st Lesson</i>	<i>Go to 1st Lesson</i>
P1	<i>Normal Lesson</i>				
P2	<i>Normal Lesson</i>				
Break	<i>Normal Break</i>				
P3	<i>Normal Lesson</i>				
P4	<i>Normal Lesson</i>	<i>Normal Lesson</i>	<i>Normal Lesson</i>	<i>BDH time for course changes conversations with 6th Form office</i>	<i>Normal Lesson</i>
<i>Lunch/Mentor time</i>	<i>Lunch (delivered) then Assembly with IW at 1355</i>	<i>Lunch then Assembly with IW at 1355</i>	<i>Assembly with IW at 1310 then lunch (year 10 delivered)</i>	<i>Mentor time then lunch</i>	<i>Mentor time then lunch</i>
P5	<i>Year 7 dismissed at 1510</i>	<i>Year 8 dismissed at 1515 Year 9 dismissed at 1520</i>	<i>Year 10 dismissed at 1515 Year 11 dismissed at 1520</i>	<i>NST time for course changes conversations with 6th Form office Year 12 dismissed at 1520</i>	<i>Year 13 dismissed at 1520</i>

The First Floor



T area (Tallinn)
for Geography and History

N area (Neuchâtel)
the home of English

L area
for Modern Languages
(French, German
and Spanish)

Pastoral
Support
Office

STAFF
ROOM

Library

Heart

Theatre below

T3

T4

T5

T6

T7

T2

T1

T8

N4

N5

N7

N8

N2

N1

N3

N6

L12

L11

L3

L4

L9

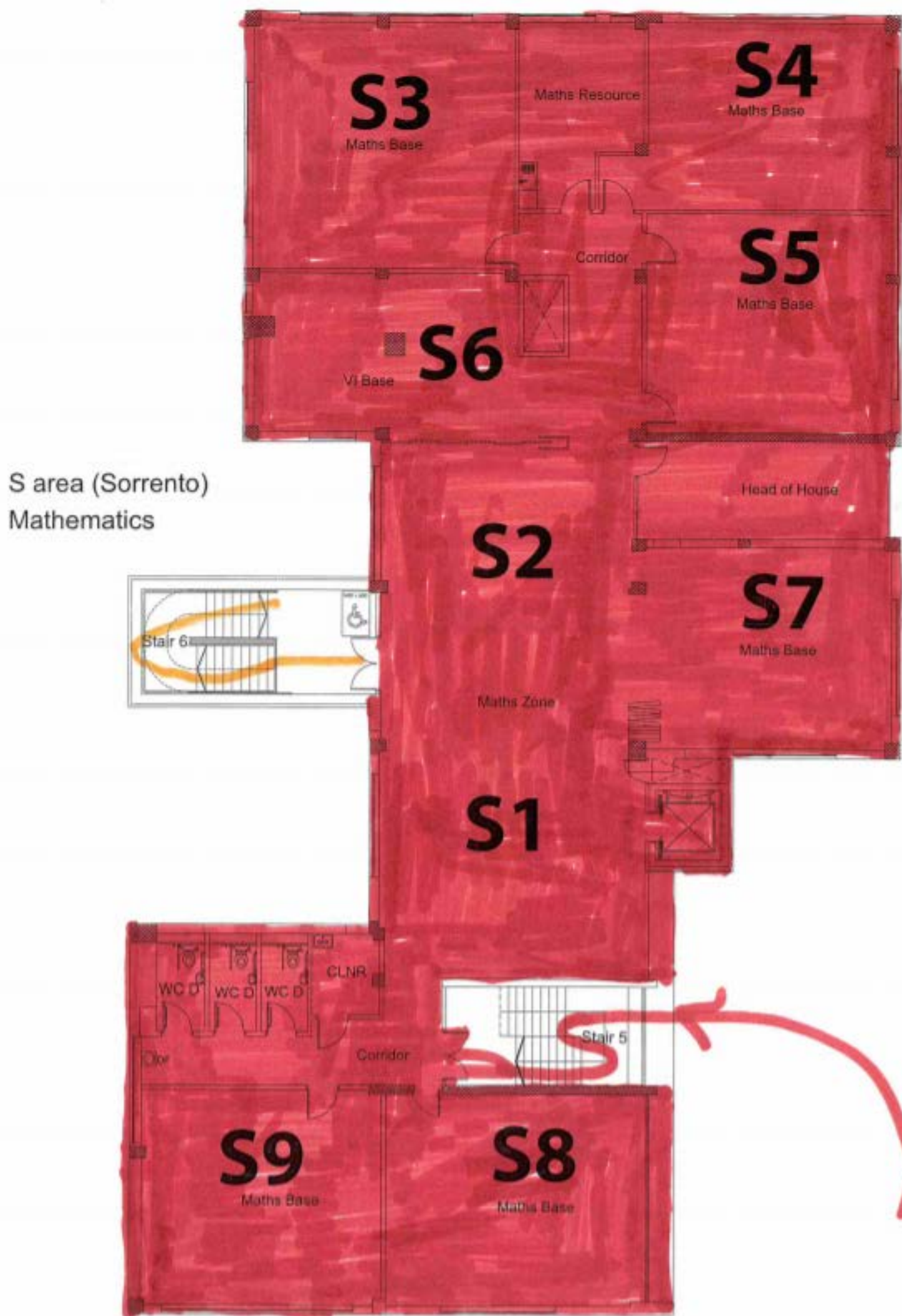
L10

L8

L5

L7

Second floor





The Ground Floor

Main Gates

Art gate

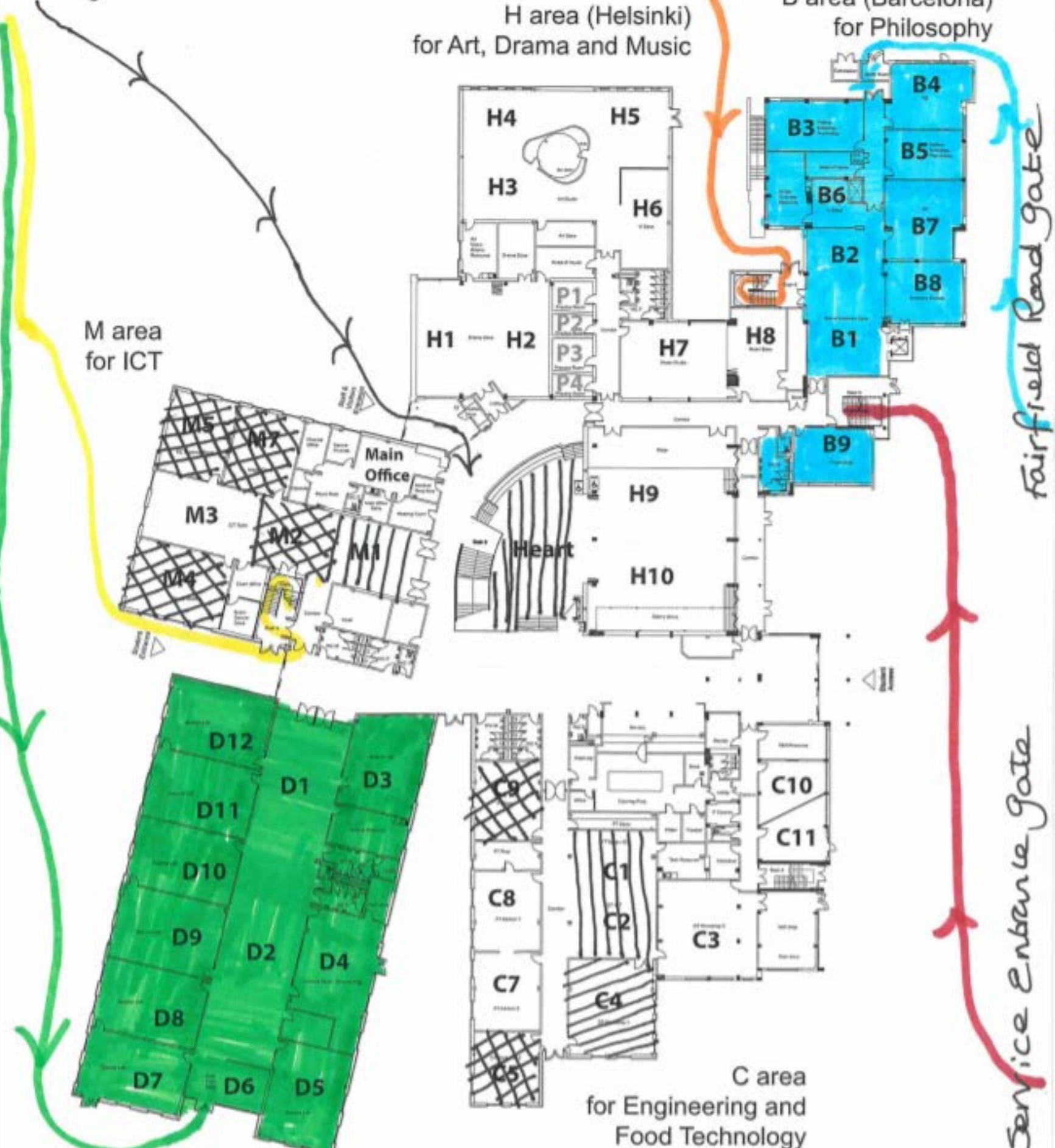
H area (Helsinki)
for Art, Drama and Music

B area (Barcelona)
for Philosophy

M area
for ICT

Fairfield Road Gate

Service Entrance Gate





HM Government

Returning to secondary school: what parents need to know



From the autumn term, all children in England will return to school full-time.

We're doing everything we can to ensure your children are safe and happy at school.

Why does my child have to go back to school?

School is the best place for children to learn and for their overall wellbeing. It gives them a routine and helps them develop their social skills. They also get to see their friends and teachers. It is vital that all children return to school in the autumn. Attendance will be mandatory again from the beginning of the new term. The prevalence of coronavirus (COVID-19) has decreased since schools and colleges restricted their opening to most pupils in March.

Is it safe for my child to return to school?

Public Health England (PHE) is clear that the risk of catching coronavirus (COVID-19) is low if schools apply a system of stringent controls to reduce the risk of spreading the virus. This includes regular handwashing and cleaning measures.

We are advising schools and parents to make sure that anyone with symptoms does not attend. The chance of children becoming severely ill from the virus is also very low.

Do children transmit coronavirus (COVID-19) more than adults?

No. Young people are no more likely to transmit the virus than adults.

Will my child be expected to socially distance in secondary school?

We are encouraging older pupils to maintain social distancing in line with government guidance, where possible. To further reduce risks, we are asking secondary schools to keep students in consistent groups and minimise mixing between groups. These groups may be larger than in primary schools, so that schools can deliver the curriculum and subject choices for students.

What should I do if my child or someone in my household has symptoms?

It's important that if your child (or anyone in their household) has any coronavirus (COVID-19) symptoms, they do not attend school and stay at home. You should arrange for them to get a test and tell your school the test results. This will help the NHS Test and Trace process. If you have a positive test result, your household should remain at home and follow the Test and Trace self-isolation guidance.

What happens if there is an outbreak in the school?

If there is an outbreak at the school, local health protection teams will work with the school to agree what action is needed. Usually, the school will not need to close, but in the event it does need to close for some or all children, the school will have a contingency plan in place so that your child's education can continue. If your local area sees a spike in infection rates that is resulting in localised community spread, the government will decide what actions need to be taken.

Is there different advice for children who are clinically extremely vulnerable?

Shielding advice for all adults and children paused on 1 August. This means that even the small number of pupils who are still on the shielded patient list and

those who have family members who are shielding can return to their school.

Visit www.gov.uk/backtoschool for more information on returning to school safely. Your child's school will have more information about the changes they have made ahead of your child's return in the autumn term.

Viv Bennett,
Public Health England's
Chief Nurse, has said:

“Parents can be reassured that to maximise safety in schools, an extremely stringent system of controls has been advised by PHE and is published in DfE guidance.

Evidence so far indicates that schools do not appear to be a primary driver of coronavirus infections in the community.

Globally children and young people have been found to experience coronavirus asymptotically or as a minor illness.”

[gov.uk/backtoschool](https://www.gov.uk/backtoschool)
[#backtoschoolsafely](https://twitter.com/backtoschoolsafely)

**gov.uk/backtoschool
[#backtoschoolsafely](https://twitter.com/backtoschoolsafely)**